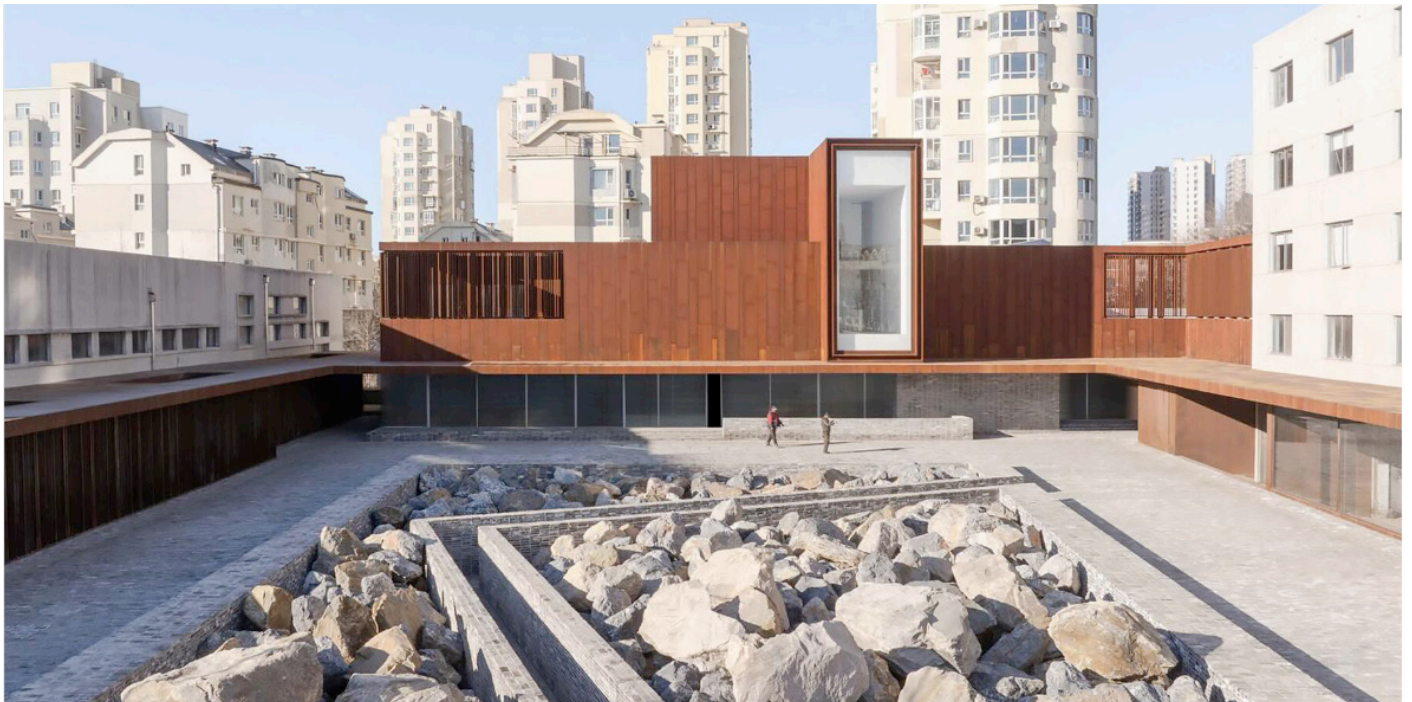


“neri&hu transforms chinese chemical research center into corten-clad cultural hub”

designboom; Jun 2025

<https://www.designboom.com/architecture/nerihu-chinese-chemical-research-center-corten-clad-cultural-hub-dalian-yard-06-16-2025/>

designboom®



neri&hu transforms chinese chemical research center into corten-clad cultural hub

## **NERI&HU REVITALIZES INDUSTRIAL COMPOUND IN DALIAN**

Shanghai-based architecture studio **Neri&Hu Design and Research Office** has completed The Yard, a cultural and commercial transformation project in central Dalian, **China**. Repurposing a 40-year-old chemical research facility, the project converts six existing structures — formerly used as offices, warehouses, and dormitories — into a dynamic mixed-use destination. Located near university campuses and technology parks, The Yard introduces new public amenities including galleries, a library, a cinema, and retail, fostering cultural and academic engagement.

“neri&hu transforms chinese chemical research center into corten-clad cultural hub”

designboom; Jun 2025

<https://www.designboom.com/architecture/nerihu-chinese-chemical-research-center-corten-clad-cultural-hub-dalian-yard-06-16-2025/>

designboom®



The Yard by Neri&Hu | all images by DONG Image unless stated otherwise

## **THE YARD: ADAPTIVE REUSE AND URBAN RENEWAL**

The project centers around adaptive reuse, retaining the original U-shaped configuration of the buildings while introducing a cohesive design language. The formerly inward-facing complex, once anchored by a large parking lot, is now framed by an enclosed courtyard. Neri&Hu Design and Research Office introduced a system of walls, screens, and canopies that reorients the site towards community use, reinforcing its potential as a social and cultural hub.

Drawing inspiration from the spatial sequencing of Chinese gardens, the Shanghai-based team emphasized the site's hidden, introspective character. A continuous architectural envelope creates a semi-private courtyard, wrapping the central plaza with layered screens and architectural interventions. A large rock feature anchors the space, contributing to its contemplative ambiance and offering visual respite from the surrounding cityscape.

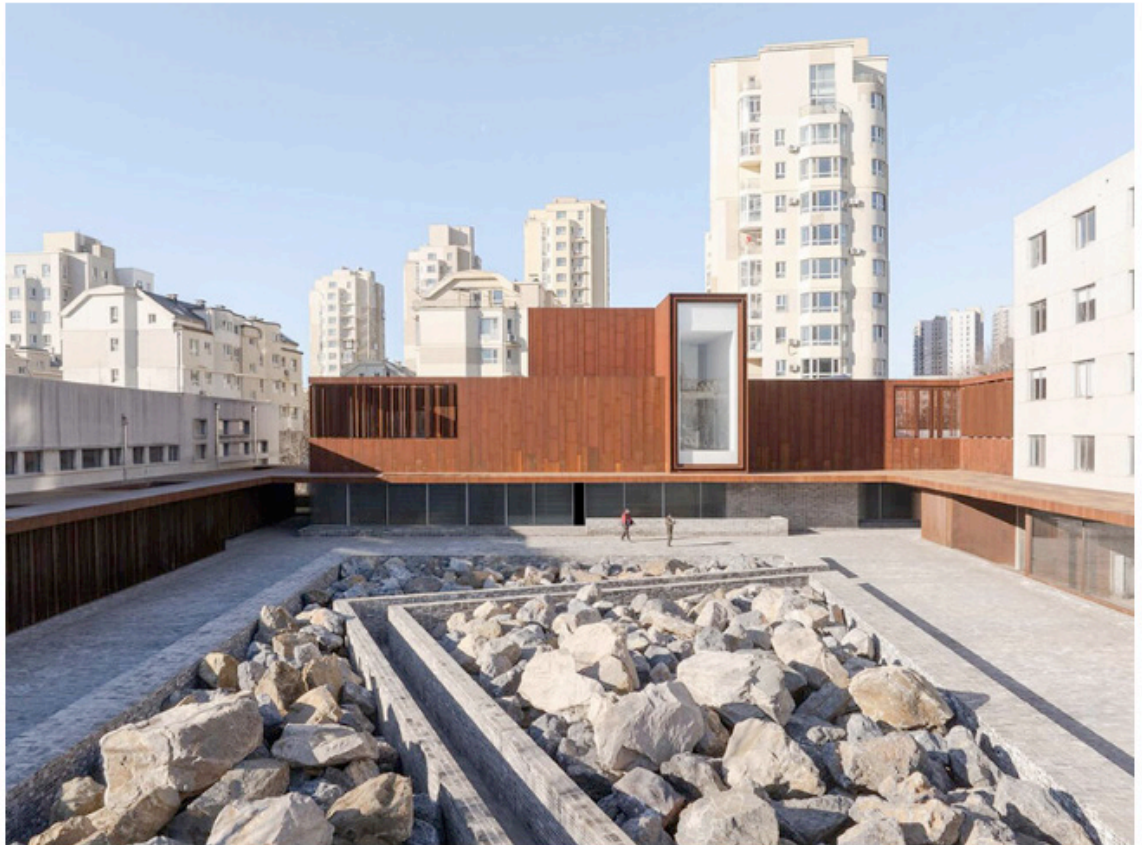


“neri&hu transforms chinese chemical research center into corten-clad cultural hub”

designboom; Jun 2025

<https://www.designboom.com/architecture/nerihu-chinese-chemical-research-center-corten-clad-cultural-hub-dalian-yard-06-16-2025/>

**designboom®**



the project converts six existing structures into a dynamic mixed-use destination

## **INDUSTRIAL MEMORY AND TEXTURAL CONTRAST**

The design features a restrained material palette that complements the site's industrial history. Corten steel, chosen for its evolving patina and industrial connotation, acts as a primary surface material. Interior spaces explore the juxtaposition between new and old—smooth plaster surfaces meet exposed brick and structural components, creating a dialogue that honors the site's past while embracing its new cultural identity.

“neri&hu transforms chinese chemical research center into corten-clad cultural hub”

designboom; Jun 2025

<https://www.designboom.com/architecture/nerihu-chinese-chemical-research-center-corten-clad-cultural-hub-dalian-yard-06-16-2025/>

**designboom®**



Neri&Hu introduced a system of walls, screens, and canopies



a large rock feature anchors the space, contributing to its contemplative ambiance